

Support through
Red Aid



Taageerada Kaalmada
Cas

ደገፍ ብ ቀይሕ ሓገዝ

Soutien par la
Rote Hilfe

racial profiling | asylum proceedings
of politically persecuted people

Profiling Isir | Nidaamyada
Magangalyada ee dadka Siyaasad
ahaan loo Silciyo

ዳለታዊ ምድላው | መሰርሕ ዑቅባ ን
ብፖሊቲካ ዝተሃድኑ ሰባት

profilage racial | p rocédure d'asile
des personnes persécuté·es
politiquement

You can find our flyer at:

<https://www.rote-hilfe.de/downloads>

A print version is available through our publisher: literaturvertrieb@rote-hilfe.de

Contact:

Bundesgeschäftsstelle Rote Hilfe e.V.

Postfach 3255

37022 Göttingen

Tel.: 0551 / 770 80 08, Fax: 0551 / 770 80 09

E-mail:

bundesvorstand@rote-hilfe.de

info@rote-hilfe.de

Please transfer membership fees and donations to the following bank account:

Rote Hilfe e. V.

Sparkasse Göttingen

IBAN: DE25 2605 0001 0056 0362 39

BIC: NOLADE21GOE



- 04 **Support through Red Aid**
Racial profiling & asylum proceedings
of politically persecuted people
- 10 **Taageerada Kaalmada Cas**
Profiling Isir & Nidaamyada
Magangalyada ee dadka Siyaasad
ahaan loo Silciyo
- 16 **ደገፍ ብ ቀይሕ ሓገዝ**
ዓለታዊ ምድላው & መሰርሕ ዑቅባ ን
ብፖሊቲካ ዝተሃድኑ ሰባት
- 22 **Soutien par la Rote Hilfe**
Profilage racial & procédure d’asile des
personnes persécutées politiquement

Support through Rote Hilfe

Racial profiling and asylum proceedings of politically persecuted people

Who is the Rote Hilfe?

Rote Hilfe (Red Aid) is a solidarity organisation (*1), that supports politically persecuted people of the left in Germany. That includes people that are persecuted in another country, when Germany does not grant them Asylum. People that experience repression (*2) because they are discriminated against in their daily life through racial profiling are also supported.

More information available at
www.rote-hilfe.de

How can the Rote Hilfe support me?

With political support and financial aid:

- We find lawyers that show solidarity, prepare trials together and accompany you throughout your trial.
- We raise funds via events of solidarity, donation collections and through our dues as registered association. Especially lawyer's and courts' fees can be taken care of in part or completely.
- For political prisoners payments can be made if the persecuted person or his family is affected by high fines, his or her imprisonment or the risk of losing his or her job.
- We stay in contact with political prisoners and advocate for better prison conditions, especially for the end of solitary confinement – we demand them free!

- We support people that experience repression through racial profiling in their daily life, even if it is not in context of a political action. That means that we provide financial aid with fines and punishments, find lawyers that show solidarity and also bear their costs in part or fully.(*3)
- We also support people who are or were active in politics and whose asylum proceedings or residence permit proceedings were rejected because of their actions.
- With public relations like demonstrations, flyers and online posts we help raise public awareness for specific cases and the underlying social mechanisms.

Become part of the Rote Hilfe:

The Red Aid is organised in two levels: on the one hand there is a federal structure for the whole country. On the other hand, there are local groups in many cities. The local groups are responsible for support and public relations. Their work depends on local political conditions. Often the local groups are working together with other local initiatives and organisations.

Most local groups offer open consultation hours. You can visit these with your issues and get informed on penalty orders, indictments, letters from the police, organising solidarity groups and other topics regarding repression.

You can find your closest local group and their consultation hours via www.rote-hilfe.de

Explanations:

*1 Solidarity for us means that we support people who are oppressed by the capitalist state so they are not alone

*2 Repression in the political sense means a systematic arbitrary abuse of power by the state and its government agencies against single persons and groups. This can happen through physical and psychological violence, through administrative acts and criminal law with fines and prison sentences. Part of those government agencies are the police, public prosecutor's offices and courts, but also other administrative agencies.

*3 People that defend themselves against racial discrimination or racial profiling by government agencies or individuals can sometimes be wrongfully accused of being an offender.



Taageerada Kaalmada Cas

Profiling Isir & Nidaamyada
Magangalyada ee dadka Si-
yaasad ahaan loo Silciyo

Waa maxay Gargaarka Cas?

Caawimada Cas waa urur midnimo (*1) oo taageera dadka siyaasad ahaan lagu silcinayo ee ka soo jeeda garabka bidix ee Jamhuuriyadda Federaalka Jarmalka (FRG) kuwaas oo lagu takooro nolol maalmeedka iyada oo loo marayo isir nacayb iyo kuwa la kulma cadaadis taas awgeed sidoo kale waa la taageeraa.

Sidee Gargaarka Cas u caawin karaa?

Annaga oo kaashanayna kaalmo siyaasadeed iyo mid maaliyadeed:

- Waxaan ku dhexdhexaadinnaa wadajirka qareennada waxaan si wadajir ah u diyaarinnaa maxkamadeynta eedaysanaha oo aan raacnaa kuwa ay khuseyso.
- Waxaan hubineynaa in culeysyada maaliyadeed ee kuwa ay saameeyeen ay si wadajir ah u qaadaan munaasabadaha wadajirka ah, lacag ururinta iyo kabidda lacagta tabaruca. Gaar ahaan, kharashaadka sharci-ga iyo maxkamadda ayaa qayb ahaan ama si buuxda loo dabooli karaa.
- Lacagaha sidoo kale waa la siin karaa maxaabiista siyaasadeed haddii ganaaxyo culus , waayitaan shaqo ama xabsi ay saba-been dhibaatooyin kuwa ay saamaysay ama qoysaskooda.

- Waxaan xiriir gaar ah la leenahay maxaa-biista siyaasadeed, waxaana u doodnaa hagaajinta xaaladaha xabsiga, gaar ahaan in meesha laga saaro keli-taliska - waxaan dalbanaynaa in lagu sii daayo!
- Waxaan taageernaa dadka ay saameysay si-faynta isirkooda. waa la xaddidaa oo markaas loo soo bandhigaa cadaadis ka baxsan ficil siyaasadeed. Tani waxay ka dhigan tahay inaan bixino taageero maaliyadeed kharashyada haddii ay dhacdo ganaax ama ciqaab, bixinno qareenno iyo sidoo kale qayb ama si buuxda u qaadanno kharashyadan. (*2) (*3)
- Annaguna waan taageersannahay Dadka siyaasadda u fir-fircoonaa ee magangelyadooda ama habraacooda degenaanshiyaha loo diiday hawlhooda awgeed.
- Iyadoo loo marayo shaqada xiriirka dadweynaha sida; Bannaanbaxyo , waraaqo ama qoraallo online ah , waxaan ka caawineynaa in kiiska iyo hababka ka dambeeya loo ogaado dadweynaha guud ahaan.

Ku biir Gargaarka Cas

Caawinta Cas waxa ay shaqadeeda u abaabus-haa laba heer: dhinaca dalka oo dhan iyo dhi-naca kale waxa jira kooxo maxali ah oo ka jira magaalooyin badan.

Shaqada taageerada iyo xiriirka dadweynaha waxaa fuliya kooxaha deegaanka. Tani waxay ku xiran tahay hababka siyaasadeed ee ka dhaca goobta.

Kooxaha deegaanka inta badan waxay si wadajir ah ula shaqeeyaan hindisayaasha iyo ururada kale ee maxaliga ah.

Inta badan kooxaha maxaliga ahi waxay bixiyaan saacado wada tashi furan oo joogto ah. Halkaas waxaad noogu iman kartaa walaacaa-ga oo aad ka heli kartaa amarrada ciqaabta, eedeymaha, waraaqaha booliiska, abaabulka kooxaha midnimada, ama mowduucyo kale oo cadaadis ah.

Waxaad ka heli kartaa kooxda kuugu dhow iyo saacadaha xafiiskooda www.rote-hilfe.de

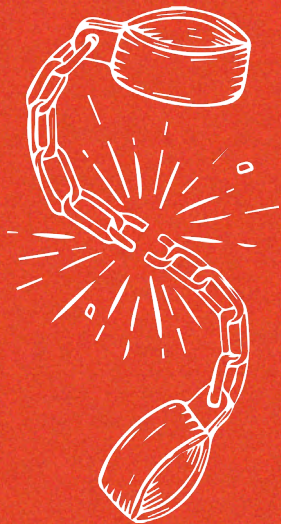
Sharaxaad:

*1 Anaga, isku duubni waxa ay ka dhigan tahay in aan ka qayb qaadanayno in dadka ku dulman dawladda hantiwadaaga ee qaabka caburinta ah aysan kaligood ku ekaan oo ay helaan taageero shakhsi ahaan.

*2 Caburinta marka laga hadlayo xaalada siyaasadeed waxa ay muujinaysaa ku takri fal awoodeed oo bareer ah oo ay dawlada iyo hay'adaha dawladu kula kacayaan shaqsiyaad iyo kooxo. Tani waxay ku dhici kartaa rabshad jireed iyo mid maskaxeed, iyada oo loo marayo ficillo maamul ama iyada oo loo marayo nidaamka ciqaabta, taasoo keenta ganaax iyo xarig.

Hay'adahan dawliga ah waxaa ka mid ah booliiska , xafiiska xeer ilaalinta guud iyo maxkamadaha , laakiin sidoo kale maamulada iyo qaab dhismeedka maamulka.

*3 Dadku waxay la kulmi karaan cadaadis ay sababu tahay is-ilaalinta ka dib takoorka isir-takoorka / isir nacaybka ee dawladu / cadaawad ka timaada shakhsiyaadka gaarka ah sidaas darteedna lagu riixo door khaldan oo dembiilayaal ah.



ደገፍ ብ ቀይሕ ሓገዝ

ዓለታዊ ምድላው & መሰርሕ ዑቅባ ን ብፖሊቲካ ዝተሃድኑ ሰባት

ቀይሕ ሓገዝ እንታይ እዩ፡

ቀይሕ ሓገዝ ምሕዘነት ማሕበራት ኮይኑ (*1), ብ ናይ ፖሊቲካ ዝተሃድኑ ሓገዝ ዝህብ፡ ካብ ጸጋማዊ ክንፊ ንዝኾኑ ሰባት ምስ ፌደራል መንግስቲ ጀርመን (FRG) እዩ።

እዚ ካእ ኣብ ካልእ ሃገራት ዝህደኑ፣ ኣብ ጀርመን ናይ ዑቅባ ሕትኦም ንዝተነጸገ ሰባት እዉን ዘጠቓለለ እዩ።

ኣብ መዓልታዊ ህይወቶም ዓለታዊ ጸኛጥን ምድላውን ንዝወረደም ሰባት እዉን ሓገዙ የበርክት። (*2)

ተወሳኪ ሓበሬታ ኣብዚ ተወከሱ www.rote-hilfe.de

ቀይሕ ሓገዝ ብኸመይ እዩ ዝሕግዝ፡

ፖሎቲካውን ፋይናንሳውን ሓገዛት፡

- ምስ ናይ ሕገ ጠበቓታት ሕብረት ብምግባር ምድላዎትና ብምጽፋፍ ፡ መከላኸሊ ብምድላወ ፈተነታት ነካይድን ነቶም ግዲያት ድማ ነሰንዮም።
- ናይ ሕብረት ጥርናፊታትን ዋዕላታትን ብምድላወ ነቲ ገንዘባዊ ሓገዛት ነዋህልል። ከምኡ እውን ካብ ኣባላት ናይ ገንዘብ ሰልጾ ብምግባር፡ ነቲ ፋይናንሰያዊ ጸገማት ናይ ግዲያት ዉሑስ ከም ዝኸውን ንገብር ኣብ መንጉኡም ከም ዝመቓቐል ድማ ንገብር። ብፍሉይ ከኣ ንጠበቓታት ናይ ሕግን ወጻኢታት ናይ ቤት ፍርድን ብኸፊል ወይ እውን ብምሉእ ከም ዝሸፈነሎም ይግበረሎም።
- ኣብ ጉዳይ ናይ ፖሎቲካ እሱራት፡ ገንዘባዊ ክፍሊቶም ክኸፈለሎም ይኸእል እዩ። እዚ ግን እቲ ክፍሊት ካብ ዓቕምም ንላዕሊ ምስ ዝኸውን ወይ እውን ብሰንኪ ማእሰርቲ ሰርሖም ምስ ዝመዛበሉ፡ ወይ እውን ሰድራቤቶም ኣብ መዋጥር ምስ ዝህልዉ ይኸውን።

- ምስ ናይ ፖሎቲካ እሱራት ብእካል ርክብ ኣለና። ናይ ማእሰርቲ ኩነታቶም ንክመሓየሽሎም ድማ ጸዕርታት ነካይድ። ናይ ኣሞኩር ኩነታቶም ተርእዩ ብቕልጡፍ ዝፍትሕሉ ኩነታት ድማ ንፈጥር።
- ኣብ መዓልታዊ ህይወቶም ናብ ተነጽሎ ዓሌታዊ ምድላውን ንዝተቐልፀ ሰባት፡ ብሰንኩ ድማ ኣብ ፖሎቲካዊ ከይዲ ዓፈና ወይ ዓበጣ ንዘጋጠሞም ሰባት ንኸግዝ። እዚ ማለት ኣብ ግዜ ሽግርም ወይ ድማ ኣብ ግዜ መቕጸዕቶም ገንዘባዊ ሓገዝ፡ ናይ ጠበቓታት ድጋፍ ምስ ምሉእ ወይ ከፊላዊ ሓገዝ ንገበረሎም።* (*3)
- ከምኡ ድማ ኣብ ፖሎቲካዊ ንጥፈታት ንዝተጸምዱ እሞ፡ ብሰንኩ ናይ ዑቕባ ሕቶኦም ንዝተነጽገ ሰባት ድማ ሓገዛት ነበርክት።
- ብ ሰራሕ ህዝብዊ ርክባት (ኣብነት) ሰላማዊ ሰልፊ፡ ፋላየር (ብሰፊሕ ዝዘርጋኡ ወርቕት)፡ ብ ቀጥታዊ መሰመር ወይ ኦንላይን(online) ብምጥቃም፡ ጉዳያቶም ዝሰፍሐ ክፋል ህዝቢ ከምዝበጸኡ ንገብር። በዚ ድማ ኣፍልጦ ሓፋሽ ህዝቢ ኣብቲ ጉዳይ ከምዝብርኽን ሓገዛት ከምዝርከብን ንገብር።

ኣብ ቀይሕ ሓገዝ ብምስታፍ ሕብሩና

ቀይሕ ሓገዝ ብኽልተ ነገራት ሰርሑ የከናወን፡
በቲ ሓደ ገጹ ናብ ሃገር ምሉእ ዝዓለመ ክኸውን እንከሎ፡
በቲ ሓደ ድማ ከባብያዊ ጥርናፊታት ኣብ ብዙሓት
ከተማታት ብምፍጣር ሰርሑ የካይድ።

እተን ከባብያዊ ጥርናፊታት ሓላፍነተን ኣብ ሓገዛትን
ህዝባዊ ርክባትን ኣብ ከባቢኣን ኣብ ዝግበር ዘተኮራ
ይኾና።

እዚ ኣብቲ ከባቢ ኣብ ዘሎ ፖሎቲካዊ ኩነታት ዝተሰረተ
ኮይኑ፡ ኣብ ከባቢኣን ምስ ዘለዎ ህዝባዊያን ማሕበራት ናይ
ህዝቢ ጉዳይ ወከልትን ብሕብረት ይሰርሓ።

ዝበዘሓ ከባያዊ ጥርናፊታት፡ ክፋት ናይ ሰራሕ ሰዓታት
ብምድላዉ ኣገልግሎተ ይህባ። ኣብዚ ክፋት ሰዓታት ድማ
ጉዳያትኩም ብምሓዝ ክትበጽሑና ትኽእሉ። ኣብኡ ድማ
ብዛዕባ ናይ መቐጻዕቲ ጉዳያትኩም፡ ዝተመሰረተልኩም
ክሲ ይኹን ወረቓቕቲ ወይ ደብዳቤታት ካብ ፖሊስ
ወይ ድማ ካብ ንገበን ዝከታተላ ማሕበራት ወይ ናይ
ምትሕግጋዝ ማሕበራት ይኹን ካልእ ምስኡ ዝተኣሳሰር
ክትሓቱ ትኽእሉ።

ኣብዚ ዘሰዕብ መላግቦ ብምዉካስ ኣብ ከባቢኹም
ዘለዎ ዝቐረባ ከባብያዊ ጥርናፊታትን ናይ ሰራሕ ሰዓታተን
ክትፈልጡ ትኽእሉ። www.rote-hilfe.de

መግለጹ:

*1 ጥርናፈ ማለት ነዳና፡ ኣብ ትሕቲ ጭቆናዊ መጽቀቲ ዘለዉ ሰባት ብሰንኪ ካፒታላዊ ሰርዓት ኣብ ትሕቲ ጸቕጢ ንኸይተርፉ ምጽዓርን ሓገዝ ከም ዝረኽቡ ምግባርን እዩ።

*2 ጭቆናዊ ጸቕጢ ኣብ ፖሎቲካዊ ሰነ-ሓሳብ ኮነ ኢልካ፡ ወይ ዊን ከምዝበለካ ዝግበር ምልካዊ ጸቕጥን ሰልጣን ሰባት ምጋህሰን ኮይኑ ብመንግስትን መንግስታዊያን መዋቕራትን ድማ ይፍጸም። ኣብ ልዕሊ ዉልቀ ሰባት ወይ ጉጅለታት ድማ ይፍጸም። እዚ ድማ ኣካላዊ ወይ ኣእሙራዊ ዓመጽ ኣብ ልዕሊ ግዳይት ብምፍጸም፡ ወይ እዉን ምምሕደራዊ ዓመጽ ብምፍጸም ኣብ ልዕሊ ግዳያት ናይ ገንዘባዊ ክሳብ ማእሰርቲ ዝኸይድ በደል ብምፍጸም ይካየድ። እዞም ትካላት እዚኣቶም ን ፖሊሲ፡ ቤት-ጽሕፈት ሲቪል ተቐጻጸርቲ ፡ኣብያተ ፍርዲ ከምኡ እዉን ሰብ-ሰልጣንን ኣማሓደርትን የጠቓልል።

*3 ዉልቀ ሰባት ነብሶም ካብ ዓሌታዊ ምድላውን ኣብ ልዕሊኦም ዝዉሰድ ሰእልን ዘይምዕሩይ ሓደ ጎናዊ ጠመተን፣ ክከላኸሉ ክብሉ ኣብ ዘይተደልየ ምዝንባል ናይ ህወት ክወድቁ ይኸእሉ። እዚ ብመንግስታዊያን ጠሓሰቲ መሰል ወይ ዉልቃዊያን ሰባት ኣብ ዘይግብኦምን ዘይምጥናም ቦታ ከቐምጦም ይኸእል እዩ።



Soutien par la Rote Hilfe

Profilage racial & procédure d'asile des personnes persécutées politiquement

Qu'est-ce que c'est la Rote Hilfe?

La Rote Hilfe est une organisation de solidarité (*1) qui soutient les personnes du milieu „gauche“ qui sont persécutées politiquement en Allemagne. Cela inclut également les personnes qui sont persécutées dans un autre pays et à qui on refuse un statut d'asile politique en Allemagne.

Les personnes qui sont discriminées dans leur quotidien par le profilage racial et qui subissent de ce fait de la répression sont également soutenues.

Plus d'informations sur www.rote-hilfe.de

Comment la Rote Hilfe soutient-elle ?

Avec une aide politique et financière:

- Nous organisons l'intervention d'avocats solidaires* et préparons les procès avec les accusés et les accompagnons.
- Nous veillons à ce que les charges financières des personnes concernées soient réparties solidairement, par des événements de solidarité, de collectes de fonds et de subventions de membres de l'organisation.
- Les frais d'avocat et de justice, en particulier, peuvent être partiellement ou totalement pris en charge.
- Pour les prisonniers politiques, des paiements peuvent être effectués si l'emprisonnement a causé des amendes, la perte d'un emploi ou/et avec cela a mis les personnes concernées ou leurs familles en difficulté.

- Nous maintenons un lien personnel avec les prisonniers politiques et nous luttons pour que les conditions de détention soient améliorées et pour la fin de la détention en isolement - nous demandons leur libération !
- Nous soutenons les personnes qui sont, en raison du profilage racial, limitées dans leur vie quotidienne et qui subissent à cause de cela une répression en dehors d'une action politique. Cela signifie que nous pouvons soutenir les frais en cas d'amendes ou de sanctions, nous aidons à trouver des avocats et nous prenons en charge une partie ou la totalité de ces frais. (*3)
- Nous soutenons également les personnes qui ont exercé des activités politiques et dont la demande de séjour a été refusée en raison de leur activités.
- Par un travail de relations publiques, par exemple par des manifestations, des tracts ou des contributions en Internet, nous aidons à faire connaître le cas et les mécanismes qui le favorisent à un public plus large.

Participer à la Rote Hilfe:

La „Rote Hilfe“ organise son travail à deux niveaux : D'une part, au niveau national et d'autre part, par des groupes locaux, qui existent dans de nombreuses villes. Les groupes locaux se chargent du travail de de soutien et de relations publiques. Cela s'oriente en fonction des processus politiques qui se déroulent sur place. Fréquemment, les groupes locaux coopèrent avec d'autres initiatives et organisations sur place.

La plupart des groupes locaux proposent des permanences régulières. Vous pouvez y venir avec vos problèmes et vous informer sur des ordonnances pénales (Strafbefehl), des actes de poursuite (Anklageschrift), des lettres de la police, l'organisation de cercles de solidarité ou d'autres thèmes ou questions liés à la répression.

Vous pouvez trouver le groupe local le plus proche de chez vous et ses heures de consultation sur: www.rote-hilfe.de

Explications:

*1 Pour nous, la solidarité signifie que nous contribuons à ce que les personnes confrontées à l'oppression de l'État capitaliste, sous forme de répression, ne restent pas seules en tant qu'individus et qu'elles reçoivent du soutien.

*2 La répression dans le contexte politique exprime un abus de pouvoir volontaire et arbitraire de l'État et des organes de l'État envers des individus et des groupes. Cela peut se produire par la violence physique et psychique, par des actes administratifs ou par le système pénal avec des conséquences d'amendes et des peines de prison. Ces organes de l'État sont notamment la police, le ministère public et les tribunaux, mais aussi les autorités et les structures administratives.

*3 Des personnes qui se sont auto-protégées après avoir été victimes de discrimination/de profilage racial peuvent être puossés dans un faux rôle de traiteur, par l'État ou des personnes privées.





www.rote-hilfe.de